



DAVIDSON COUNTY SHERIFF'S OFFICE

AVERAGE DAILY POPULATIONS OF DETENTION FACILITIES

DECEMBER 2011

TO: Daron Hall, Sheriff

EC: Steve Anderson, Chief of Police
Donna Blackbourne, Criminal Justice Planning Director
Sue Cain, Director of Law
Jim Charles, Associate Director of Law
Karl Dean, Mayor
Dawn Deaner, Public Defender
Steve Dozier, Criminal Court Judge
John Ford, DCSO Chief Deputy
Byron Grizzle, DCSO Records Manager
John Hudson, DCSO Chief of Administration
Torry Johnson, District Attorney General
Leon Ruben, General Sessions Judge
Tony Wilkes, DCSO Chief of Corrections

FROM: Melinda McDowell, DCSO Database Program Manager

DATE: January 11, 2012

SUBJECT: Average Daily Populations of Davidson County Detention Facilities, DECEMBER 2011

This report is a summary of the average daily populations of the Davidson County detention families for the month of DECEMBER 2011.

Notes:

Locally sentenced felons are reported as those serving up to six years on a primary conviction, so this group does not include felony probation/parole violators, who have a separate classification. It does include a sub-group of locally sentenced felons who are serving "misdemeanor time" (sentenced to less than a year on a felony conviction).

For purposes of this report, inmates classified as "convicted DUI" have been included in the "convicted misdemeanants" group.

As instructed, no numbers for individual facilities are identified in this report with the exception of the locally sentenced felons being reported (on page 3 only) showing how those housed at the Metro Detention Facility compare with the total DCSO population of all classifications, including the locally sentenced felons at DCSO facilities.

Bound-over juveniles are no longer included with their specific charge class and are grouped separately.

Graphic displays of the data begin on the next page. The table on page 2 displays the raw numbers for the current month, along with the percentages of changes from the previous month.

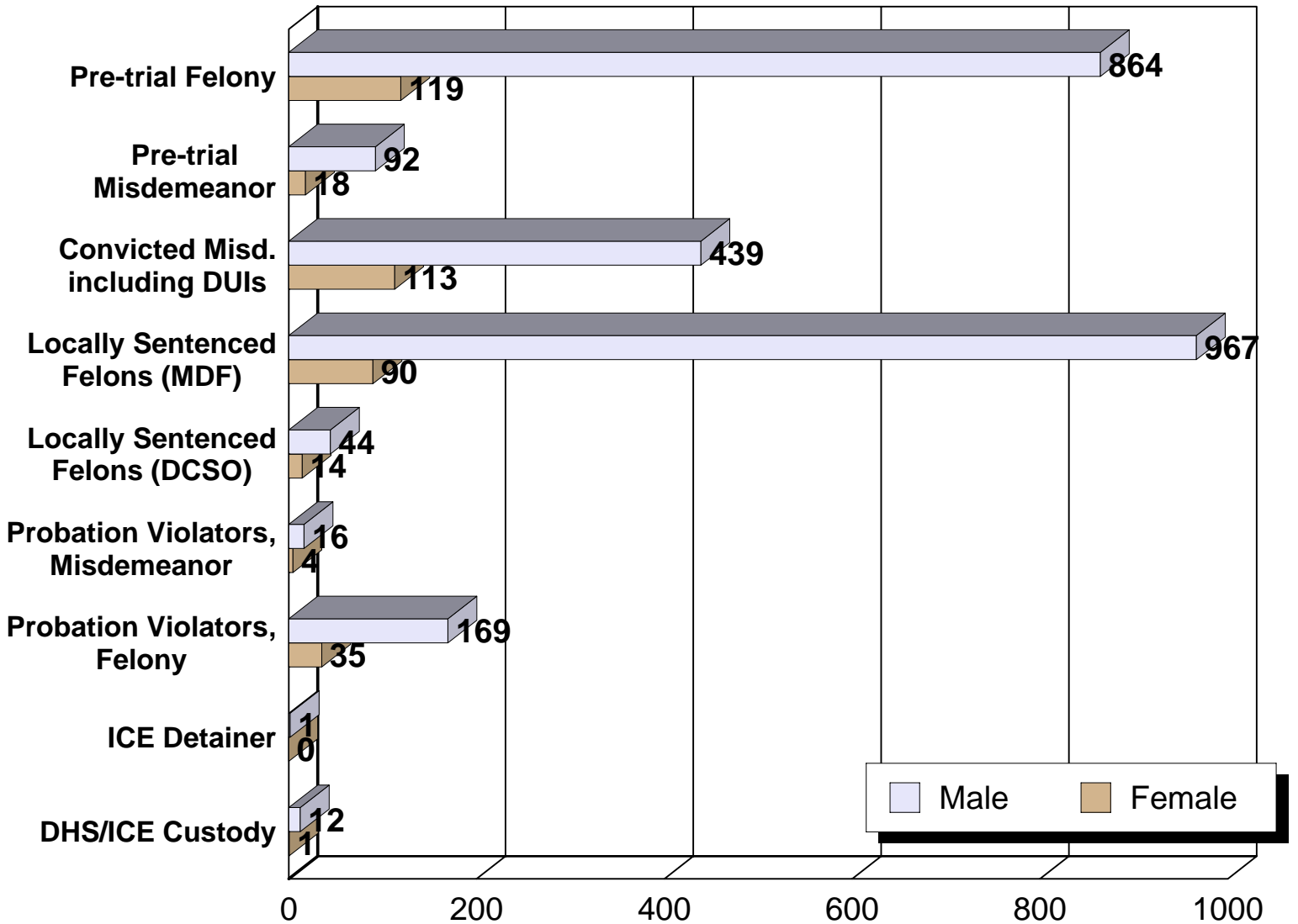
SUMMARY OF AVERAGE DAILY POPULATIONS

Charge Classification	November	December	Change
Average Daily Population for all Classifications and all Facilities	3,314	3,254	- 1.8%
Pre-trial Felony	973	983	- 1.0%
Males	850	864	- 1.6%
Females	123	119	- 3.3%
Pre-trial Misdemeanor	113	110	- 2.7%
Males	93	92	- 1.1%
Females	20	18	-10.0%
Convicted Misdemeanants including DUIs	576	552	- 4.2%
Males	468	439	- 6.2%
Females	107	113	+ 5.6%
Locally Sentenced Felons	1,127	1,116	- 1.0%
Males	1,024	1,012	- 1.2%
Females	103	104	+ 1.0%
Probation Violators, Felony	230	205	- 10.9%
Probation Violators, Misdemeanor	32	21	- 34.4%
*ICE Detainers	1	2	+ 100.0%
Males	1.3	1.5	+ 15.4%
Females	0.0	0.1	n/a
*DHS / ICE Custody	13	13	+ 0.0%
Males	13	12	+ 7.7%
Females	0.0	0.5	n/a
**All Other Classifications	240	242	+ 0.8%
Males	220	221	+ 0.5%
Females	21	21	+ 0.0%
Juveniles - Bound Over	10	11	+ 10.0%
Males	10	11	+10.0%
Females	0	0	n/a

** ICE Detainers includes inmates who have no active local charges and are being held on a 48 hour ICE Detainer. DHS/ICE Custody includes inmates who have no active local charges and are being held on a DHS/ICE Custody Hold or inmates who have only an active immigration charge.
** All Other Classifications includes the following charge classes: CIVCON, SPARVIO, STATESPL, STATE, FED (with no active immigrations charge), GOVERNOR, NONE, NULL (with no active charges, ICE Detainer or Custody Holds).*

FOCUS ON SPECIFIED INMATE CLASSIFICATIONS

Average Daily Populations, DECEMBER 2011



TRENDS IN CHARGE CLASSIFICATIONS AS PERCENTAGES OF MONTHLY AVERAGE DAILY POPULATIONS

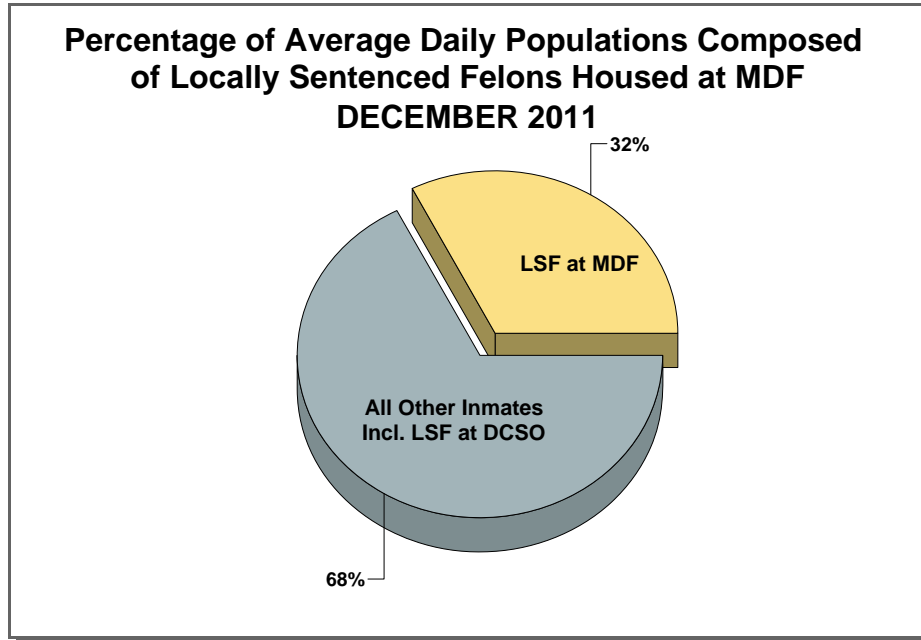
This table is intended to facilitate visualization of our population as defined by charge classification each month by allowing the reader to track changes in the relative distribution of charge types.

Charge Classification	Jan-11	Feb-11	Mar-11	Apr-11	May-11	Jun-11	Jul-11	Aug-11	Sep-11	Oct-11	Nov-11	Dec-11
Pre-Trial Felony	30.6%	29.8%	29.8%	29.5%	29.7%	30.4%	30.6%	30.7%	30.4%	30.2%	29.4%	30.3%
Pre-Trial Misdemeanor	4.5%	4.1%	3.8%	3.6%	3.7%	3.5%	3.9%	3.9%	3.8%	3.5%	3.4%	3.4%
Convicted Misdemeanants (including DUI)	18.1%	18.3%	19.1%	19.7%	18.7%	18.7%	19.0%	18.0%	17.3%	17.2%	17.4%	17.0%
Locally Sentenced Felons*	32.8%	32.9%	32.2%	32.0%	32.0%	31.7%	30.9%	31.7%	32.3%	33.7%	34.1%	34.4%
Probation Violators - Felony	5.6%	6.1%	6.7%	6.3%	6.5%	7.2%	7.3%	7.7%	7.5%	6.5%	6.9%	6.3%
Probation Violators - Misdemeanor	0.1%	0.1%	0.1%	0.1%	0.1%	0.0%	0.1%	0.0%	0.1%	0.0%	0.0%	0.0%
ICE Detainer	0.9%	0.9%	0.8%	0.9%	0.8%	0.7%	0.7%	0.8%	0.8%	0.8%	1.0%	0.6%
DHS / ICE Custody	0.5%	0.6%	0.5%	0.6%	0.6%	0.5%	0.6%	0.5%	0.5%	0.5%	0.4%	0.4%
All Other Classifications	6.8%	7.3%	7.1%	7.4%	8.0%	7.3%	6.9%	6.7%	7.4%	7.4%	7.3%	7.5%
TOTAL AVERAGE DAILY POPULATION	100%	100%	100%	100%	100%	100%	100%	100%	100%	100%	100%	100%

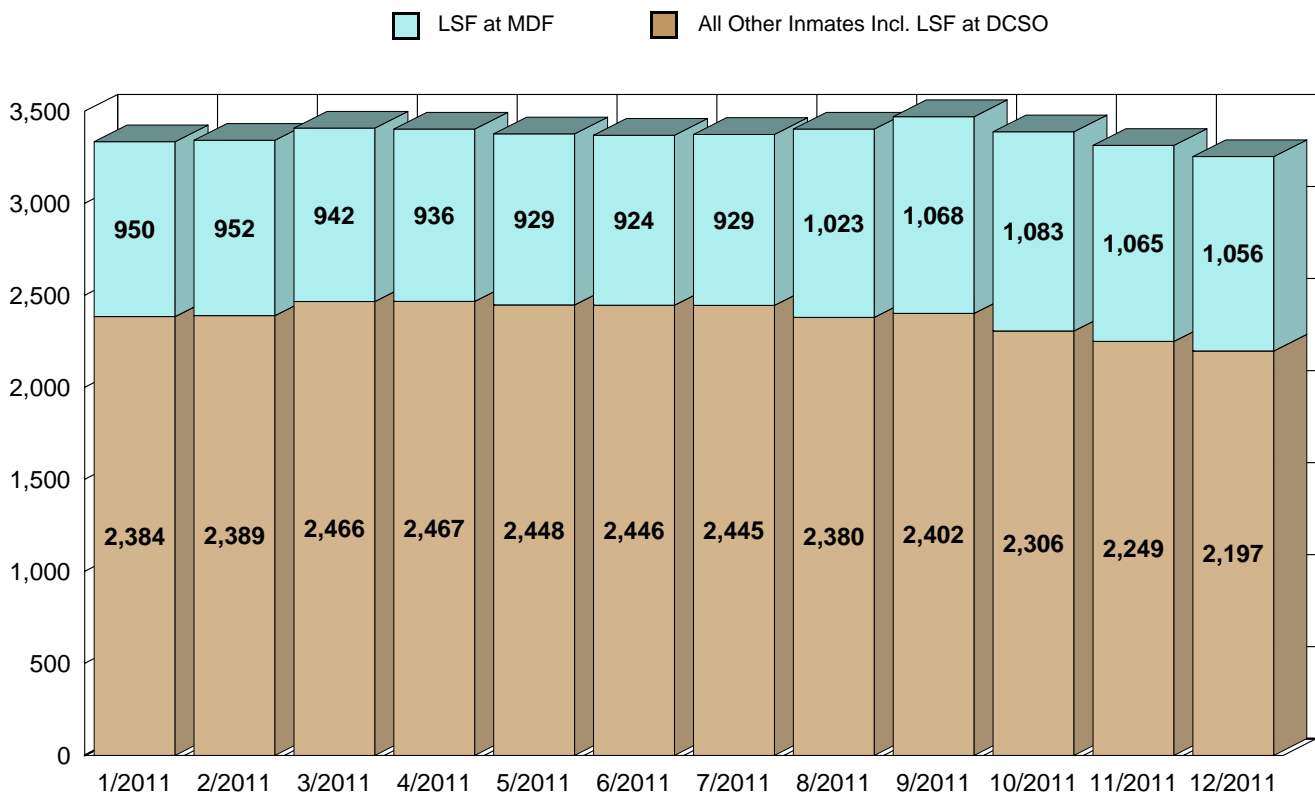
* Note: These are all locally sentenced felons both at MDF and DCSO.

FOCUS ON LOCALLY SENTENCED FELONS HOUSED AT THE METRO DETENTION FACILITY (MDF)

This page focuses on the locally sentenced felons who are housed at MDF. Locally sentenced felons housed at DCSO are included with "All Other Inmates" for purposes of the graphs on this page only. Elsewhere in this report, if the number of locally sentenced felons at MDF is reported separately, the number of locally sentenced felons at DCSO is also reported.

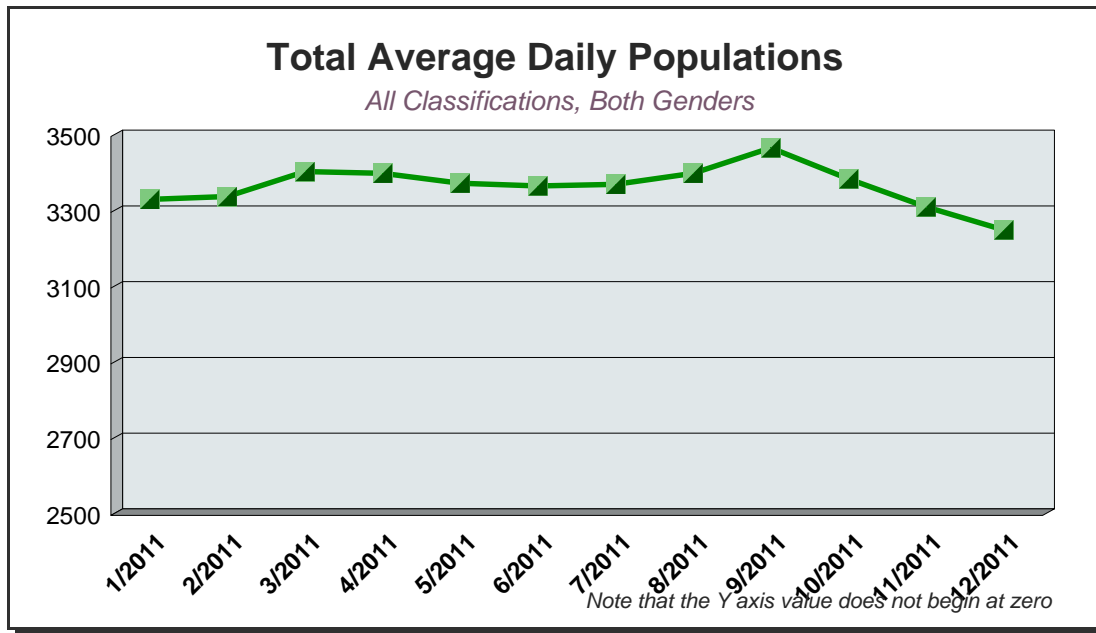


**Portion of Average Daily Population Composed
of Locally Sentenced Felons Housed at MDF**

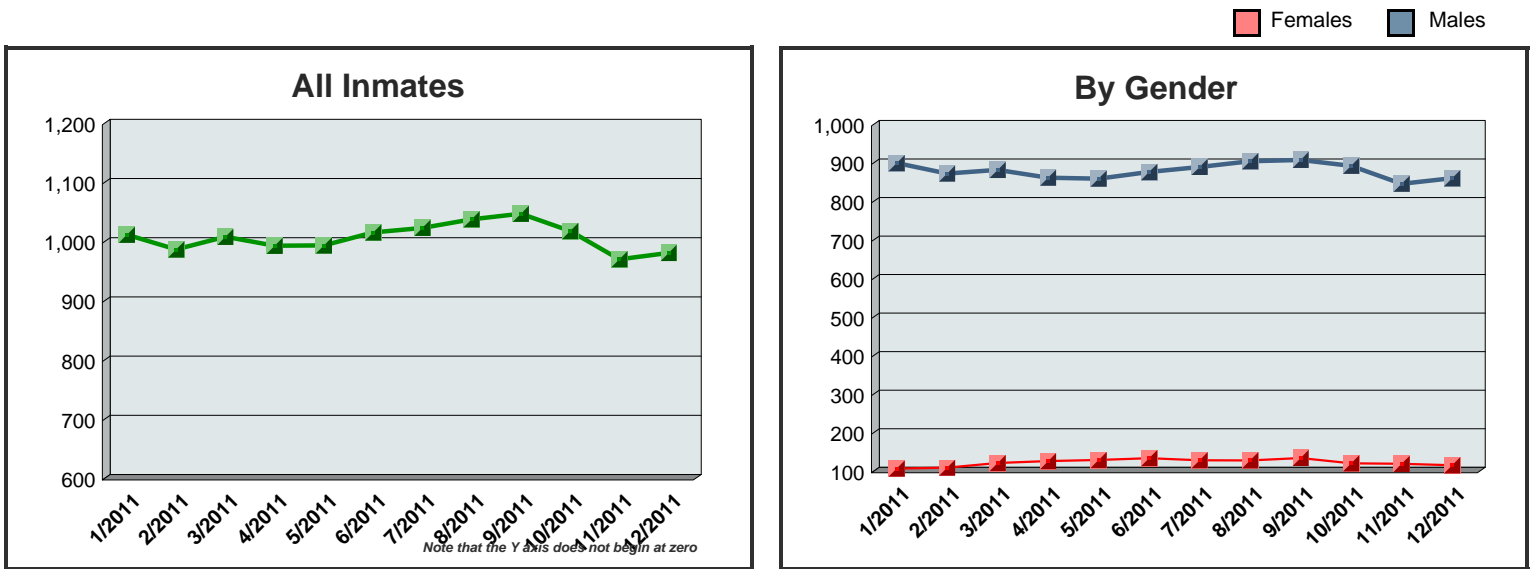


LINE CHARTS FOR TOTAL AND SPECIFIED CLASSIFICATIONS

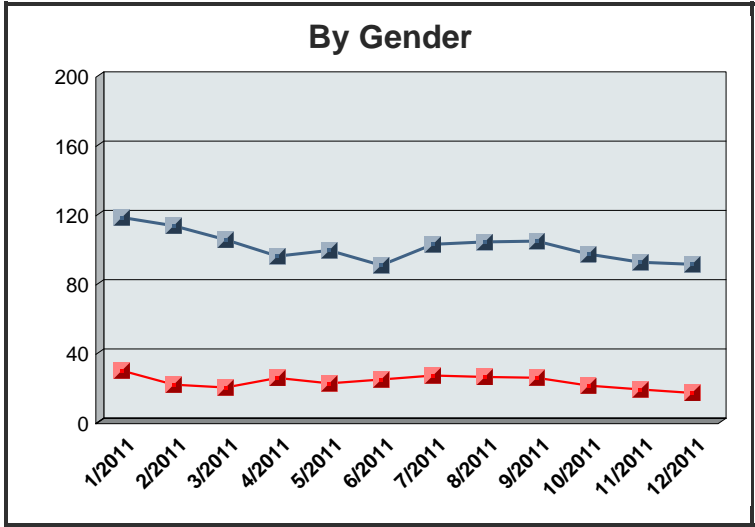
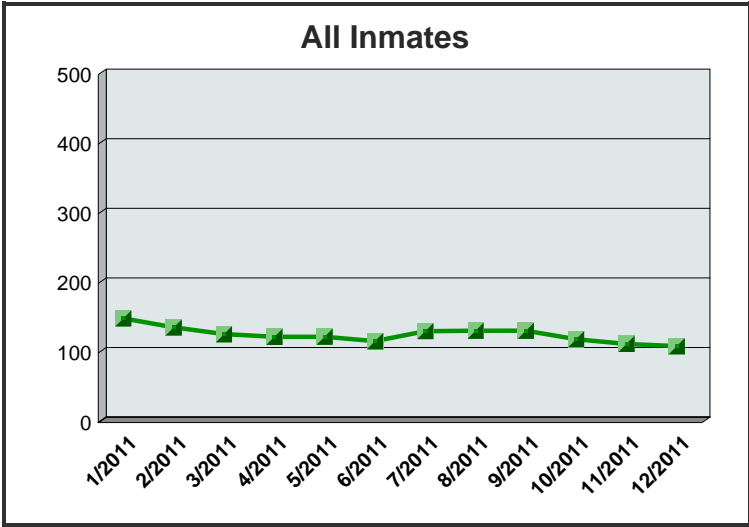
*Note that the Y axis values in some of the following graphs do not begin with zero and that some cover less than 500 points.



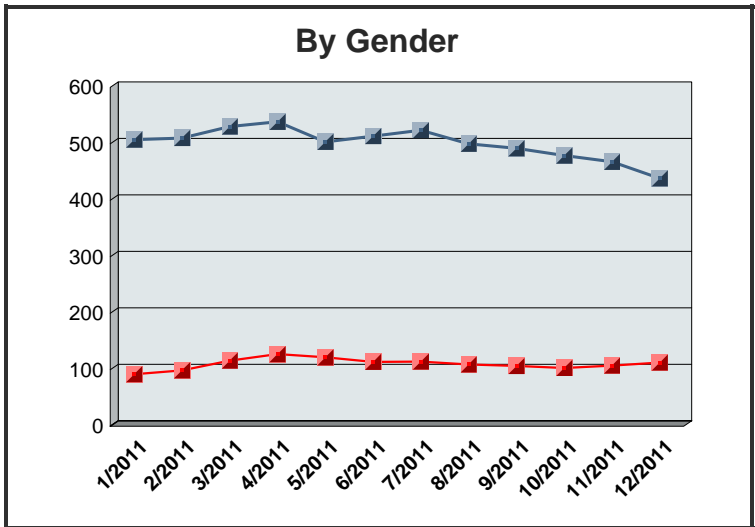
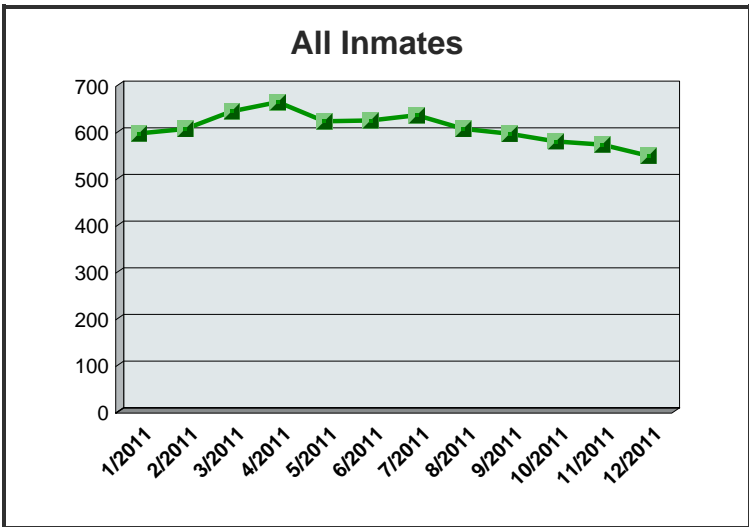
Pre-trial Felony



Pre-trial Misdemeanor

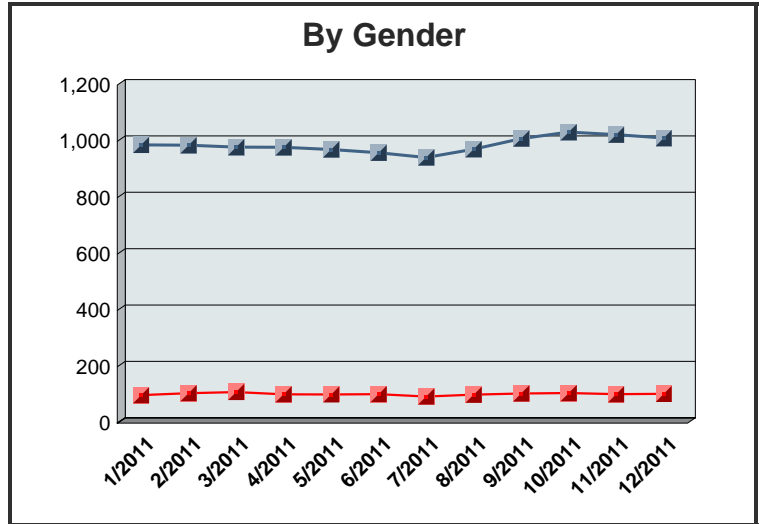
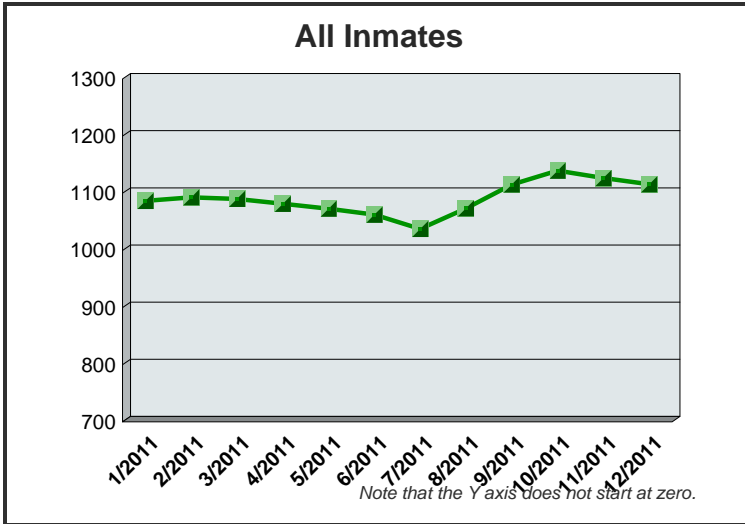


Convicted Misdemeanants (inc. DUI)

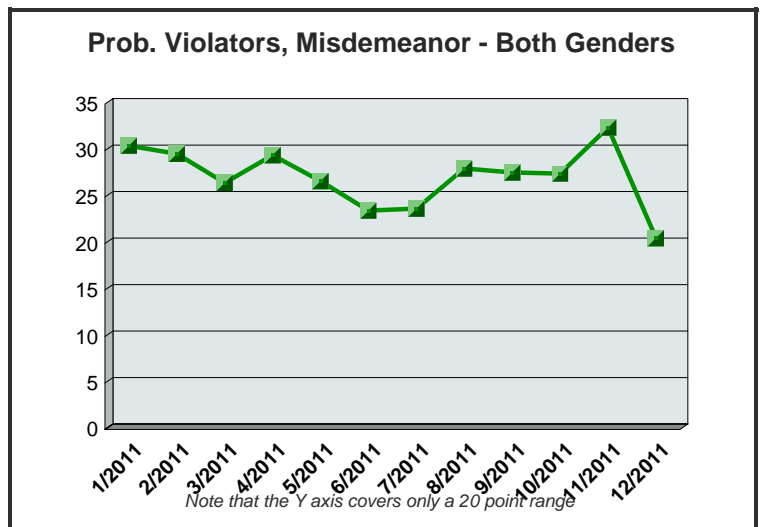
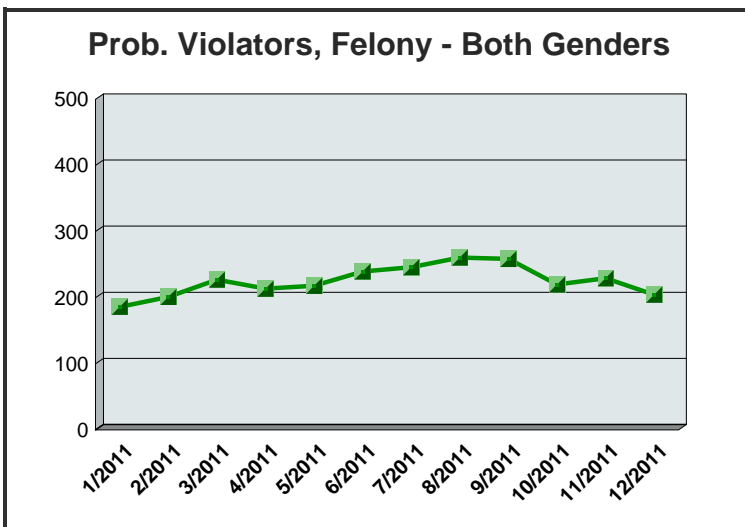


Locally Sentenced Felons

Females Males

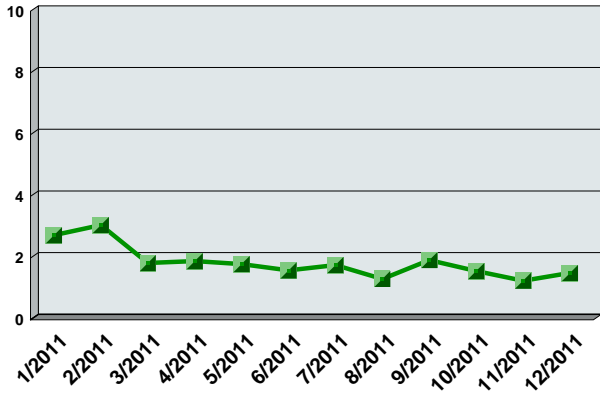


Probation Violators



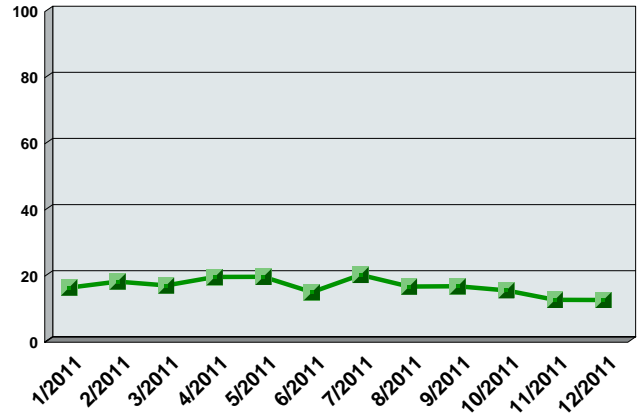
ICE Inmates

ICE Detainer - Both Genders



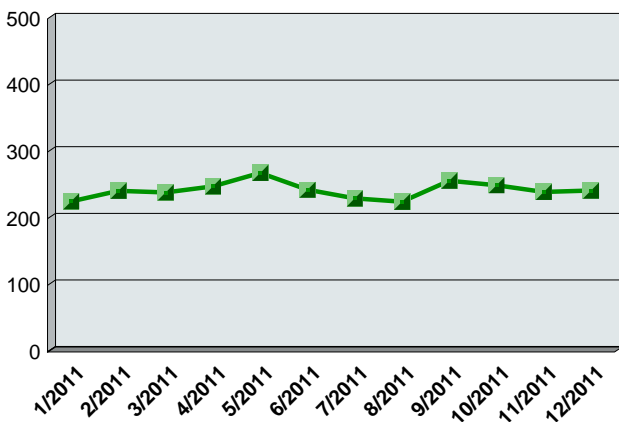
Note that the Y axis value covers only a 10 point range.

DHS / ICE Custody - Both Genders



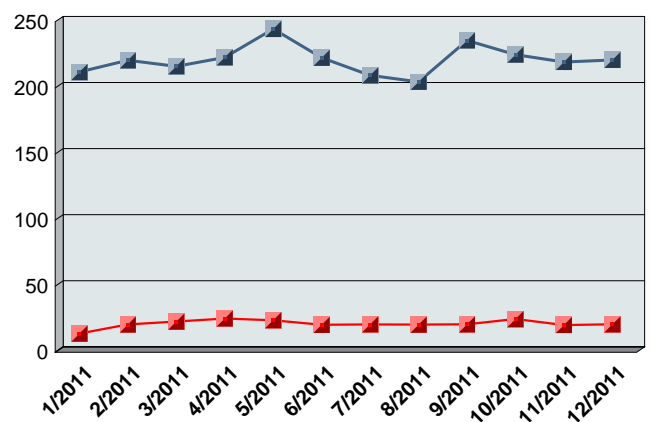
All Other Classifications

All Inmates



By Gender

■ Females ■ Males



* Increases during this time period are attributed to male inmates with state, state parole violation, and federal charges.

Juvenile Inmates

- Juveniles Housed at DCSO (from Juvenile Justice Center)
- Bound-Over Juveniles

